

“Aluminum systems for modern living.”

¹³
alupedia

2025
Products
Catalogue
alupedia.com



Innovative Acoustic Wall Panels

"Acoustic panels for modern living"



Sound
Insulation



Quality



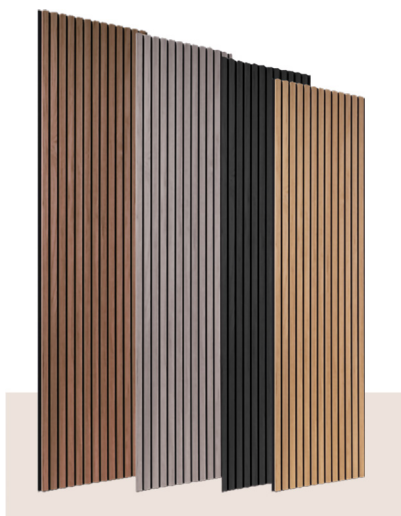
Maintenance
Free



Durable

Acoustic Wall Panels

At Alupedia, we redefine interiors with cutting-edge acoustic wall panels that seamlessly blend design, innovation, and superior quality. Our panels don't just absorb sound—they elevate aesthetics, creating spaces that are both acoustically optimized and visually stunning. We continuously push boundaries to enhance our products, ensuring they meet the highest standards of functionality and style.



Why Choose Alupedia's Acoustic Wall Panels?

- Innovative Designs – Sleek, modern, and customizable to match any interior.
- Advanced Sound Absorption – Effectively reduces noise while maintaining a stylish look.
- Premium Quality – Crafted from high-grade materials for long-lasting performance.
- Sustainable & Eco-Friendly – Thoughtfully designed with sustainability in mind.
- Easy Installation – Hassle-free setup for any residential or commercial space.

Experience the perfect blend of form and function with Alupedia's acoustic wall panels—where sound meets style.

¹³
alupedia

Modern **Acoustic Wall Panels**

"Acoustic panels for modern living"



ATLAS



Thickness: 18 mm
Width: 120 mm



DIAMOND



Thickness: 12 mm
Width: 120 mm



ANTARES



Thickness: 12 mm
Width: 120 mm



RIGEL



Thickness: 18 mm
Width: 120 mm



CAPELLA



Thickness: 14 mm
Width: 120 mm



VEGA



Thickness: 18 mm
Width: 92 mm

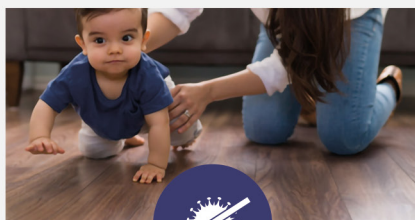


American
Luxury Plank
Alupedia

**UNMATCHED QUALITY,
UNBEATABLE PRICES**



100% Waterproof



Antibacterial



Fireproof



Scratch Resistance



Sound Absorbent



Suitable for Underfloor Heating

✓ **Easy Installation**

✓ **High Quality**

✓ **Low Maintenance**

✓ **Economical**

SPC (Stone Plastic Composite) flooring stands out as a durable, waterproof, low-maintenance, and cost-effective flooring option. It is ideal for high-traffic areas and spaces prone to moisture. With its click-lock system, it is easy to install, making it perfect for DIY projects. SPC flooring is resistant to scratches, stains, and water damage, ensuring long-lasting performance. Its wide range of styles and designs mimics the look of wood, stone, or tile, offering aesthetic versatility for any space. Additionally, its thick core and cushioned underlayment provide enhanced comfort and sturdiness. Overall, SPC flooring offers a balance of affordability and high performance.

Color Options



Nation Wide Shipping



20-Year Warranty



**24/7 Expert Advice
On Hand to Help**



ALUPEDIA SPC FLOORING FACTORY



Aluminum Outdoor Furniture

"Aluminum systems for modern living"



Transform your outdoor spaces with Alupedia's aluminum furniture systems, crafted to bring elegance, comfort, and durability to your outdoor spaces.

Strong: Made from high-quality aluminum with a 2mm profile thickness, offering superior resistance to rust and decay.

Expert Welding: Aluminum parts are welded using advanced laser welding technology for seamless strength and longevity.

Water-Resistant Fabrics: Ensures long-term functionality and beauty, even in challenging weather conditions.



Premium Iroko Wood: Used for wooden components, known for its exceptional water resistance and suitability for outdoor use.

Protective Coating: Coated with electrostatic powder paint for a long-lasting, flawless finish.

Comfortable Cushions: Seat cushions feature 10cm-thick, 32 DNS foam for firm support, while back cushions are filled with soft silicone fiber for ultimate comfort.



Nation Wide Shipping



20-Year Warranty



24/7 Expert Advice
On Hand to Help

Alupedia aluminum furniture combines modern design with outdoor resilience, creating functional and stylish spaces built to last.

VERRONA MODEL

1 Set Dimensions: 3 Seater

3 Seater Sofa + 2 Single Armchairs + 1 Coffee Table

Sofa: 190cm length x 80cm width

Single Armchair: 75cm length x 70cm width

Coffee Table: 80cm x 140cm



UV-Resistant



Maintenance
Free



Water-Resistant



Quality



Rust-Free



¹³
alupedia

Secure Exterior Doors



Sound
Insulation



Quality



Maintenance
Free



Durable

Our company will continue to be a global brand that is followed, not imitated, by bringing together aesthetics and quality and responding to evolving and changing customer demands.



Today, one of the most preferred types of doors in terms of security, comfort and aesthetics is steel doors. Steel doors, which have a wide range of uses from homes to workplaces, from apartment entrances to villas, attract attention with their sturdy structures and stylish designs. With developing technology, steel doors are now preferred not only for security but also for decorative purposes.



Impact
Resistant



Heat
Insulation



Nation Wide Shipping



20-Year Warranty



24/7 Expert Advice
On Hand to Help

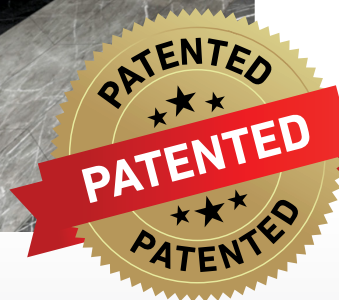


¹³
alupedia
Secure **Exterior** Doors





Aluminum Shower Cabin Systems



Aesthetic and Practical Shower Cabin Systems

Our shower cabin system stands out with its easy installation and sleek design. The wheel-free structure provides a quiet and smooth user experience. The sliding system mechanism saves space and offers ease of use. The 6 mm thick tempered glass enhances safety and ensures durability. This product combines both aesthetic and functional features, making it an ideal choice. Additionally, with a 5-year warranty, it guarantees a secure and reliable usage experience. Thanks to its quick and easy installation, this system perfectly complements modern bathroom needs.

- ✓ Easy Installation
- ✓ Sliding System
- ✓ 6 mm Tempered Glass
- ✓ Wheel-Free Design
- ✓ Fully Secure
- ✓ Aesthetic and Functional Design



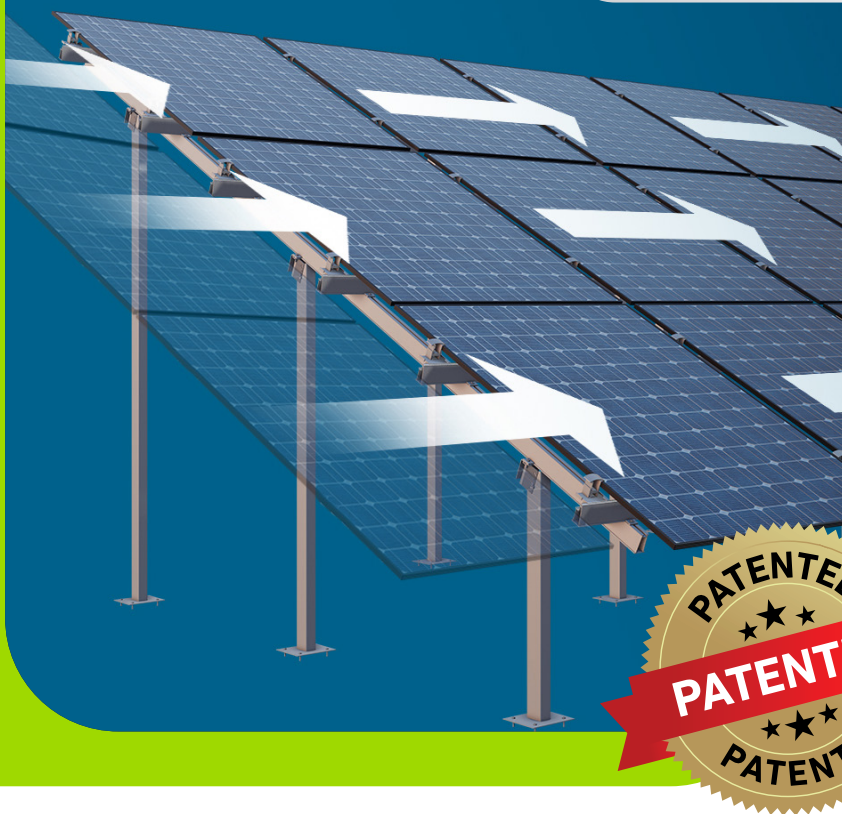
Nation Wide Shipping



10-Year Warranty



24/7 Expert Advice
On Hand to Help



Aluminum **Solar Energy** Systems

"Aluminum systems for
modern living."

Innovative Mounting Solution for Solar Energy!

Our patented sliding mounting mechanism is specially designed for solar systems, featuring a lightweight and durable aluminum construction. This system requires minimal labor and ensures quick installation, allowing you to save both time and costs. With its easy-to-assemble structure, the single-point sliding installation speeds up the process and maximizes efficiency on-site. We provide innovative and reliable solutions for the future of solar energy!

- | **Patented Design** – Unique and innovative mechanism.
- | **Aluminum Construction** – Lightweight, durable, and corrosion-resistant.
- | **Fast Installation** – Less labor, shorter assembly time.
- | **Easy Application** – Practical mounting with single-point sliding.
- | **Time & Cost Efficiency** – Less workforce, more productivity.
- | **Strong & Long-lasting** – Maximum resistance to harsh weather conditions.



Nation Wide Shipping



24/7 Expert Advice
On Hand to Help



Aluminum Privacy Fence Gates

"Aluminum systems for modern living."



Elevate your outdoor space with Alupedia's high-quality aluminum privacy fences—designed, engineered, and manufactured for unmatched strength, durability, and style. Our fences are built to withstand harsh weather conditions, resist rust and corrosion, and require little to no maintenance. Available in a variety of modern designs and colors, Alupedia fences provide the perfect balance of privacy, security, and aesthetics, making them the ideal choice for any residential or commercial property.'

Full Closure Aluminum Privacy Fence

- 45x72 mm Aluminium post
- Hidden Screws
- Standard RAL colors are available
- Simple, clean and stylish lines
- Easy do-it-yourself assembly



Rust-Free



Quality



Maintenance Free



Durable



Nation Wide Shipping



10-Year Warranty



24/7 Expert Advice
On Hand to Help



Aluminum Privacy Fence Gates

Why Choose Aluminum?

For homeowners who want a long-term investment, better aesthetics, and superior performance in all weather conditions, aluminum privacy fences are the clear choice.

Premium Look & Modern Aesthetic – Aluminum offers a sleek, high-end appearance

More Customization Options – Aluminum fences can be powder-coated in various colors and styles for a unique look.

Eco-Friendly – Many aluminum fences are made from recycled materials

Longer Lifespan – Aluminum fences last decades with minimal maintenance

Higher Wind Resistance – Aluminum fences are stronger against high winds, making them ideal for storm-prone areas.

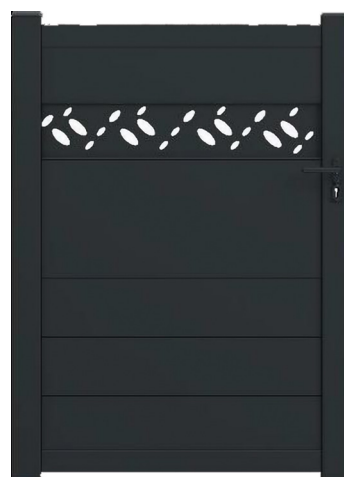
Superior Strength & Durability – Aluminum resists impact, cracking, and warping

Weather Resistance – Aluminum withstands extreme heat, cold, and UV exposure

Full Closure Aluminum Privacy Fence Gates

- 45x72 mm Aluminium post
- Hidden Screws
- Simple, clean and stylish lines
- Easy do-it-yourself assembly

Patterned Design



Rust-Free



Quality



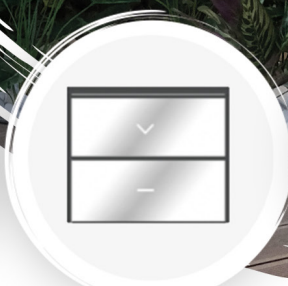
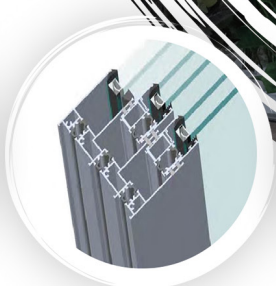
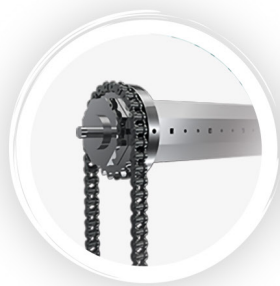
Maintenance Free



Durable

Motorized Guillotine Window Systems

"Aluminum systems for modern living."



Advanced Chain Conveyor System: Designed to effortlessly lift heavy panels with durability.

■ **Superior Insulation & Panoramic Views:** Thermally insulated aluminum profiles and double-glazed panels ensure exceptional heat and air insulation.

■ **Versatile Glazing Options:** Available in various combinations, including laminated, decorative, or frosted glass, to meet project-specific needs. Compatible with both single and double glazing.

■ **Customizable Finishes:** Available in any RAL color with powder coating or anodizing, as well as decorative surface options like natural wood veneer or wood-pattern transfer.

■ **Innovative Safety Features:** Includes solutions such as the "Hand-Safe Profile," specially engineered to prevent finger or hand injuries during operation.



Quality



Rust-Free



Durable



Maintenance
Free



Nation Wide Shipping



10-Year Warranty



24/7 Expert Advice
On Hand to Help



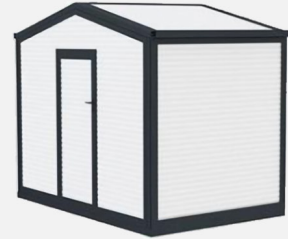
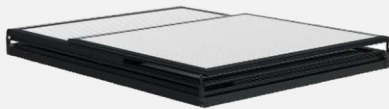


Patented Aluminum Warehouse Systems



Insulated

READY
IN **5**
MIN.



Alupedia's patented container unit is manufactured through 5mm insulated wall panels with high-quality aluminum profile construction. Installation can be completed with two people without the use of welding through special screws and bolts in approximately 5 minutes. The flooring material is an eco-friendly, fully-recycled board panel. The lightweight container unit is suitable for exterior installations, and available in colors of anthracite grey and white.

Applications Areas

Portable containers can be used in construction sites, as storage units, farming and hunting cabins, and similar applications.

Water Resistant

Water insulation is ensured with rubber seals nested in all profiles, providing complete and uninterrupted sealing.

Expandable Options

It offers solutions suitable for all needs through adjustable dimensions.

Durability

The containers are durable against various weather conditions. They are designed to withstand wind speeds of up to 120 km/h and significant snow loads of up to 400 kg/m².



Nation Wide Shipping



10-Year Warranty



24/7 Expert Advice
On Hand to Help

¹³
alupedia

Ready Warehouse Systems



READY
IN **5** *MIN.*

EASY INSTALLATION



NO SCREW
DRILL
EXPERT

Aluminum Outdoor Led Lighting Systems

"Aluminum systems for modern living."

Alupedia Outdoor Lighting Systems is one of the most renowned lighting brands. We bring innovation, modern design, and top-quality LED lighting solutions to projects across the globe.

Our outdoor LED lighting systems, combine durability, energy efficiency, and aesthetic appeal, ensuring the perfect balance of functionality and style for any space.

Designed to withstand the elements, our products offer cutting-edge technology, superior performance, and long-lasting illumination. Whether for residential landscapes, commercial exteriors, or large-scale urban projects, we provide tailored solutions that enhance safety, ambiance, and architectural beauty.



Rust-Free



Quality



Maintenance
Free



Durable



Nation Wide Shipping



10-Year Warranty



24/7 Expert Advice
On Hand to Help



Aluminum Outdoor Led Lighting Systems

"Aluminum systems for modern living."



Wall Lights & Sconces

Elegant and functional designs to enhance outdoor facades.

Chandeliers

Statement pieces that bring sophistication to outdoor spaces.

Floor Lamps

Durable and stylish solutions for patios, gardens, and walkways.

Table Lamps

Portable, weather-resistant lighting for refined outdoor settings.

Room & Ambient Lighting

Soft, ambient illumination for seamless outdoor comfort.

Pendant Lights

Sleek and modern fixtures to elevate outdoor environments.

We understand what clients and partners need: high-performance lighting, reliability, and aesthetic appeal. With our expertise in manufacturing and design, we deliver superior solutions tailored to every project.

Aluminum Entry Mat Solutions

"Aluminum systems for modern living."

¹³
alupedia



As Alupedia, we specialize in designing and manufacturing high-quality aluminum entry mats that seamlessly blend durability, functionality, and aesthetic appeal. Our products are engineered to enhance the safety and cleanliness of your entrances while complementing your architectural vision.

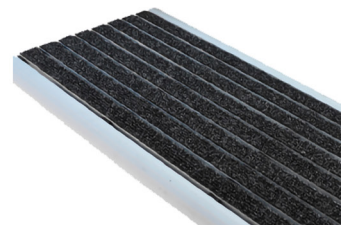
Why Choose Alupedia?

Superior Durability: Our aluminum entry mats are built to withstand heavy foot traffic and harsh weather conditions, ensuring long-lasting performance.

Easy Maintenance: The roll-up design allows for effortless cleaning and maintenance, ensuring your entrances remain pristine with minimal effort.

Enhanced Safety: Designed with anti-slip surfaces, our mats reduce the risk of slips and falls, providing a safer environment for your visitors.

Customizable Designs: We offer a variety of tread inserts and color options to match your specific aesthetic and functional requirements.



Nation Wide Shipping



10-Year Warranty



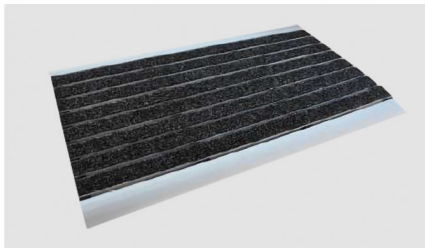
24/7 Expert Advice
On Hand to Help

¹³
alupedia

Durable Aluminum Entry Mats

"Aluminum systems for modern living."

Patara Damlatas



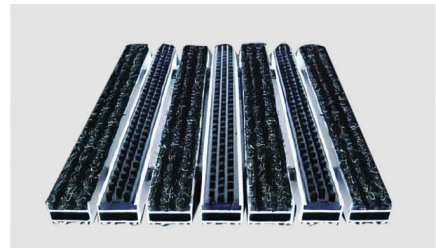
Colors

Kapadokya C25



Colors

Kapadokya PF25



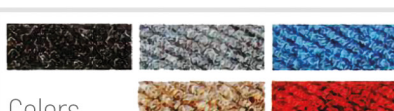
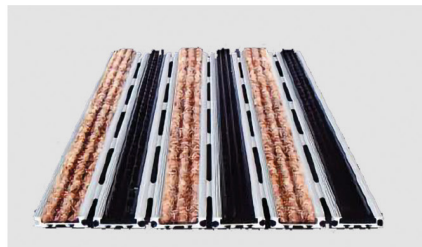
Colors

Kackar Ilgaz S26



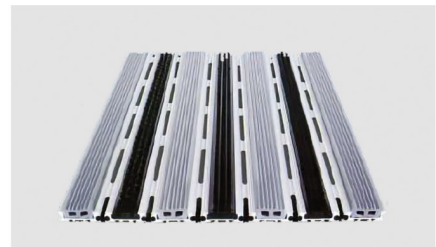
Colors

Firat Nemrut PF15



Colors

Efes Apollon PF16



Colors



Model 1: Rolling Roof Pergola Systems

Innovative Aluminum Pergola Systems

"Aluminum systems for modern living."



UV-Resistant



Maintenance Free



Water-Resistant



Scratchproof



Rust-Free



Model 2: Bioclimatic Louvered Pergola Systems

Create the ultimate outdoor lifestyle with our innovative aluminum pergola systems, designed to elevate your backyard, commercial spaces, or wholesale offerings.

Manufactured by Alupedia, our pergolas have heavy-duty aluminum frames, engineered to stay strong without bending or breaking – ensuring durability.

Enhance your experience with optional upgrades like motorized louvers, privacy screens, wind-resistant panels, and integrated lighting for a luxurious touch.



Model 3: Glass Ceiling Pergola Systems



Nation Wide Shipping



10-Year Warranty



24/7 Expert Advice
On Hand to Help



Bioclimatic Systems makes living spaces such as hotels, cafes, restaurants, residences, terraces, winter/ summer gardens, shopping centers more comfortable and indispensable with its advanced technology and folding-collecting feature. It is possible to assemble with guillotine, zip curtain and sliding glass systems.

"A Living Space for All Seasons"

- Natural shading system
- Air conditioning with natural circulation system of air
- Four seasons living space
- Innovative & Modern Designs

Led Lighting



Wood Veneer



Water Drainage



"Designing tomorrow, powering today."



"From design to production, from production back to design. A national expert engineering solution at every stage."



AC EV CHARGER

The circuit breaker and residual current device are integrated into the unit.

- Metal casing makes it resistant to impact and vandalism.
- Available in socket or cable options.
- Socket type can be customized based on country requirements (e.g., Type 1 socket is used in the USA).
- Advantages of mass production and ready-to-ship stock is available.
- Flexible, customer-specific solutions are available.



DC EV CHARGER

Delivers maximum power through a single socket.

- Power sharing is enabled when two vehicles are connected.
- No power loss when idle, due to the AC contactor in the power section.
- Available with screen options ranging from 15 to 32 inches.
- Features IP54 and IK10 protection standards.
- Equipped with an SD card slot, to store event logs.
- An optional AC output can be added.
- Advantages of mass production and ready-to-ship stock is available .
- Flexible, customer-specific solutions are available.



EV CHARGERS

"Designing tomorrow, powering today."



AC EV CHARGER

3.3kW - 22kW
2x3.7kW - 2x22kW
2x3.3kW + 22kW



DC EV CHARGER

30kW - 400kW

Power	TYPE 1	Output
-------	--------	--------

3.3 kW		Scooter Type
--------	--	--------------

3.7 kW 7.4 kW		Household Type
-----------------	--	----------------

11 kW 22 kW		Commercial Type
---------------	--	-----------------

TYPE 2		
--------	--	--

2x3.7 kW 2x7.4 kW		Household Type
---------------------	--	----------------

2x11 kW 2x22 kW		Commercial Type
-------------------	--	-----------------

TYPE 3		
--------	--	--

2 Scooter + 7.4kW		Household Type
-------------------	--	----------------

3.3kW + 2x22kW		Commercial Type
----------------	--	-----------------

2x3.3kW + 22kW		Commercial Type
----------------	--	-----------------

3x22 kW		Commercial Type
---------	--	-----------------

3x3.3 kW		Scooter Type
----------	--	--------------

Power	TYPE 1A	Output
-------	---------	--------

30 kW - 40 kW		Single Gun
---------------	--	------------

TYPE 1B		
---------	--	--

60 kW - 80 kW		Double Gun
---------------	--	------------

TYPE 2		
--------	--	--

90 kW - 120 kW - 160 kW		Single Gun Double Gun
-------------------------	--	--------------------------

TYPE 3		
--------	--	--

180 kW - 200 kW		Double Gun
-----------------	--	------------

TYPE 4		
--------	--	--

240kW - 320kW - 400kW		Double Gun
-----------------------	--	------------



Alupedia Synterflex Cladding



Alupedia **Synterflex Cladding**

Alupedia is a leading brand in innovative architectural cladding solutions, and its Synterflex products combine aesthetics with durability. These ultra-thin and lightweight panels are made from high-temperature sintered ceramic materials, offering exceptional mechanical strength for exterior façades, interior decoration, and flooring applications. Resistant to water, UV rays, scratches, and chemicals, Synterflex panels provide a long-lasting and low-maintenance solution. With their elegant and sophisticated surface textures, they add a touch of refinement to any space. Through its' sustainable and modern design, Alupedia Synterflex panels are a preferred choice for prestigious architectural projects.



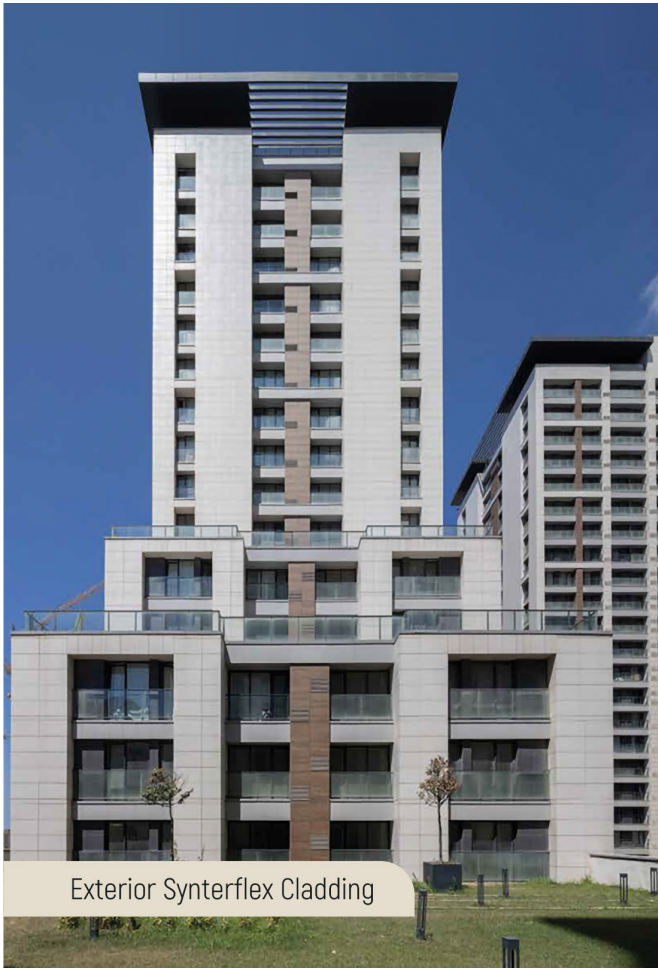
Nation Wide Shipping



10-Year Warranty



24/7 Expert Advice
On Hand to Help



Exterior Synterflex Cladding



Cement Imitation Synterflex Cladding



Metal Imitation Synterflex Cladding



Aluminum Solar Mounting Systems

"Aluminum systems for modern living."

With over 10 years of expertise in solar energy solutions, Altim delivers high-performance aluminum mounting systems designed for field, roof, and facade applications. Offering 300+ aluminum profile molds and specialized connection components, we provide both standard and custom-designed profiles tailored to your project's specific alloy and strength requirements.

Why Choose Alupedia Solar Mounting Systems?

Durability & Strength: Made from premium 6063-T66 extruded aluminum with optional black anodized finishes, ensuring longevity and resistance to environmental conditions.

Versatility: Compatible with tile, trapezoidal, and flat roofs, as well as ground-mounted systems, making it suitable for diverse solar projects.

Easy Installation: Engineered for quick assembly with pre-drilled or custom-length profiles, reducing labor time and costs.

Custom Solutions: Ability to manufacture bespoke system sections to match your project's exact specifications.

Weather Protection: Designed with EPDM gaskets for watertight performance, ensuring system integrity and long-term reliability.



Rust-Free



Quality



Maintenance
Free



Durable



Nation Wide Shipping



10-Year Warranty



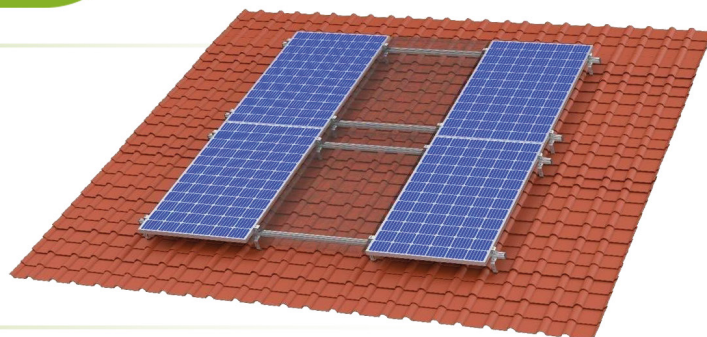
24/7 Expert Advice
On Hand to Help

Aluminum Solar Mounting Systems

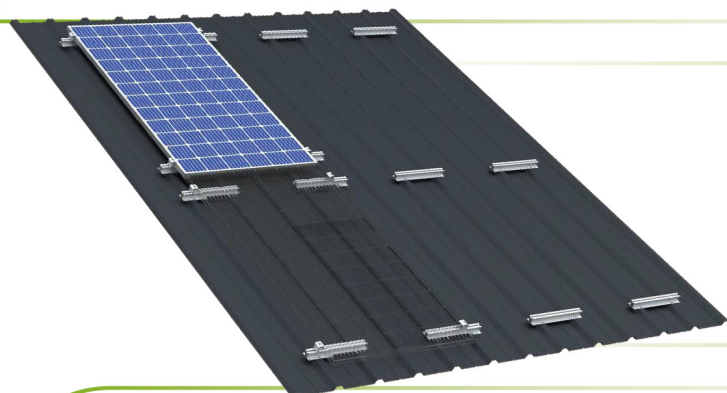
"Aluminum systems for modern living."

Tailored Solutions for Every Roof Type

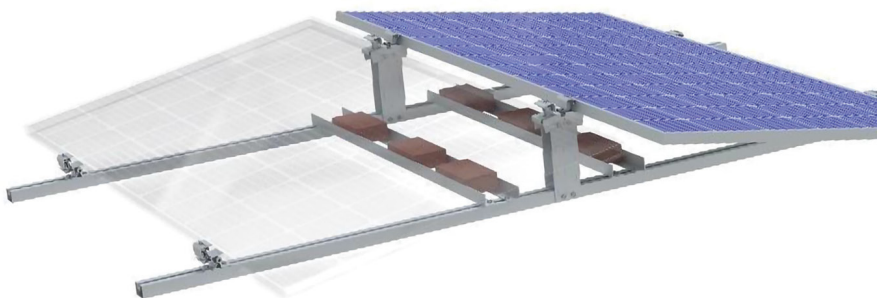
Tile Roof Systems: Seamless integration with tile roofs, available for **horizontal and vertical panel placement**, ensuring structural stability and aesthetic appeal.



Trapezoidal Roof Systems: Pre-drilled profiles or extended single-piece options (up to 6m), optimized for easy mounting on trapezoidal and sandwich panel roofs.



Flat Roof Systems: Adjustable for ground-mounting and heavy-duty applications, supporting 10-degree tilt angles in south or east-west orientations for maximum energy efficiency.



New Dimension in Solar Power

A Success in the Energy Transition

Alupedia successfully completed 650 megawatts 1.1 million solar modules. This project is an example of the successful transformation towards sustainable energy production.

¹³
alupedia

Wind Breaker System

"Aluminum systems for modern living."

Manufactured by Alupedia, our windbreaker systems enhance comfort and protection designed to minimize the impact of wind in outdoor areas. Built for both functionality and aesthetics, this system is an ideal solution for patios, terraces, and open spaces.



Quality



Rust-Free



Durable



Maintenance
Free

- ✓ Wind Protection
- ✓ Motorized Operation
- ✓ Customizable Finishes
- ✓ Versatile Use

Our Wind Breaker System offers durability with high-quality aluminum and tempered glass, ensuring long-lasting performance. Designed to withstand diverse weather conditions, it combines reliability with a sleek, elegant aesthetic. Ideal for residential, commercial, and hospitality spaces, it provides both functionality and style, meeting the needs of clients seeking customization and a superior outdoor experience.



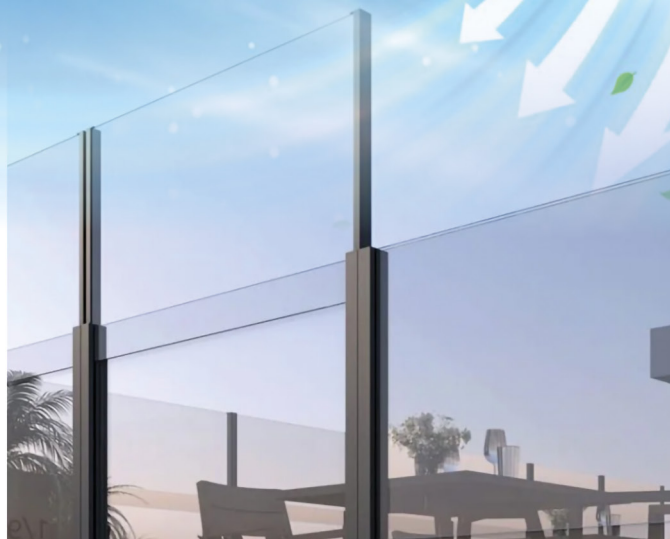
Nation Wide Shipping



10-Year Warranty



24/7 Expert Advice
On Hand to Help



Wind Breaker System



Nation Wide Shipping



10-Year Warranty



24/7 Expert Advice
On Hand to Help

📍 **Altım 1 Factory**
ASO 1. Organize Sanayi Bölgesi
Ahi Ervan Mah. Anadolu Cad. No:3
Sincan / Ankara / Turkey

📍 **Altım 2 Factory**
ASO 1. Organize Sanayi Bölgesi
Ahi Ervan Mah. Anadolu Cad. No:21
Sincan / Ankara / Turkey

📍 **Altım 3 Factory**
OSB Ahi Ervan Mah.
Altınordu Cad. No:6
Sincan / Ankara / Turkey

📍 **Altım 4 Factory**
OSB Ahi Ervan Mah.
Dağistan Cad. No:6 (Hasmak Alt Kat)
Sincan / Ankara / Turkey

📍 **Altım 5 Factory**
OSB Mah. Zeytindalı Bulvarı
İç Kapı No:13
Parsel / Aksaray / Turkey

📍 **New Jersey Warehouse**
183 Monroe Street Passaic
07055 New Jersey / USA
+1 862 379 7443

📍 **DE Warehouse**
Bayerwaldstraße 17 94377
Steinach / Germany
+49 1520 460 0606

📍 **Alurewe**
An der Helme 28b , 99734
Nordhausen. / Germany
+49 160 280 2662

www.alupedia.com

globalsales@altim.com.tr